

WWW.CONNECTINGCOOKCOUNTY.ORG

CONNECTING COOK COUNTY LONG RANGE TRANSPORTATION PLAN

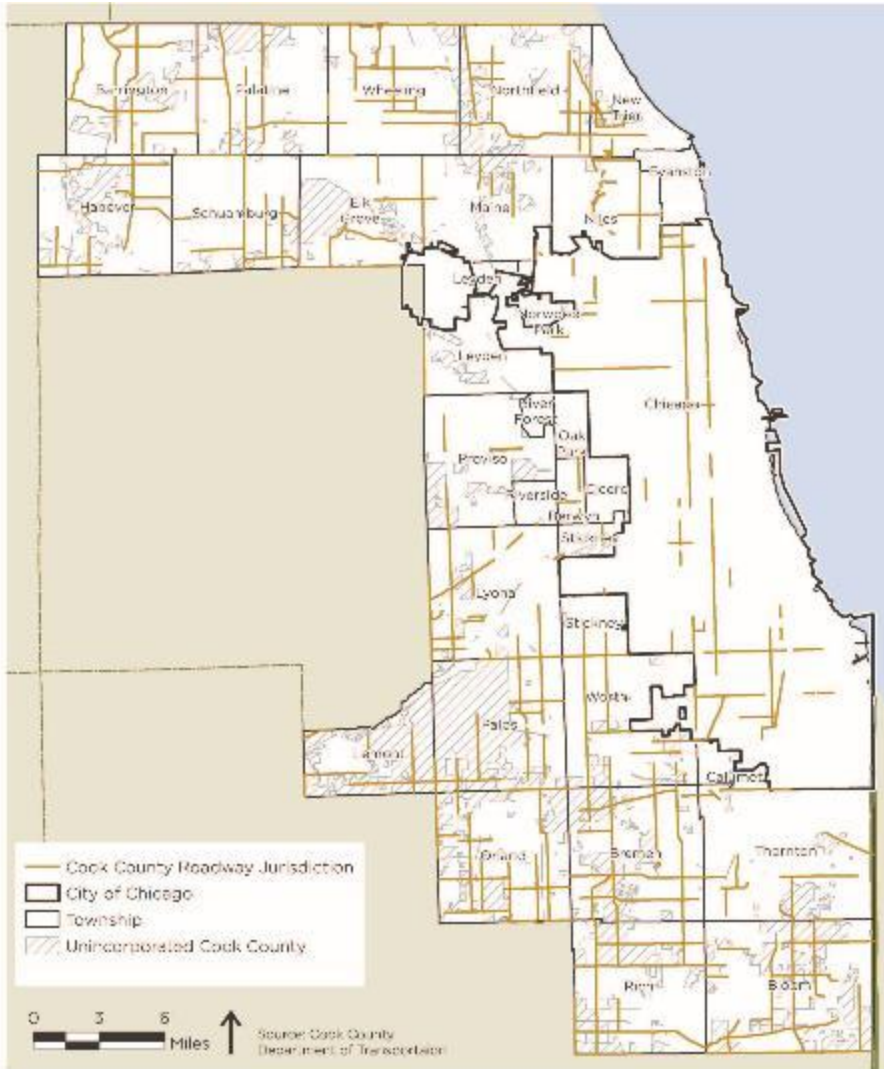
Honorable Toni Preckwinkle, President

Cook County Board of Commissioners

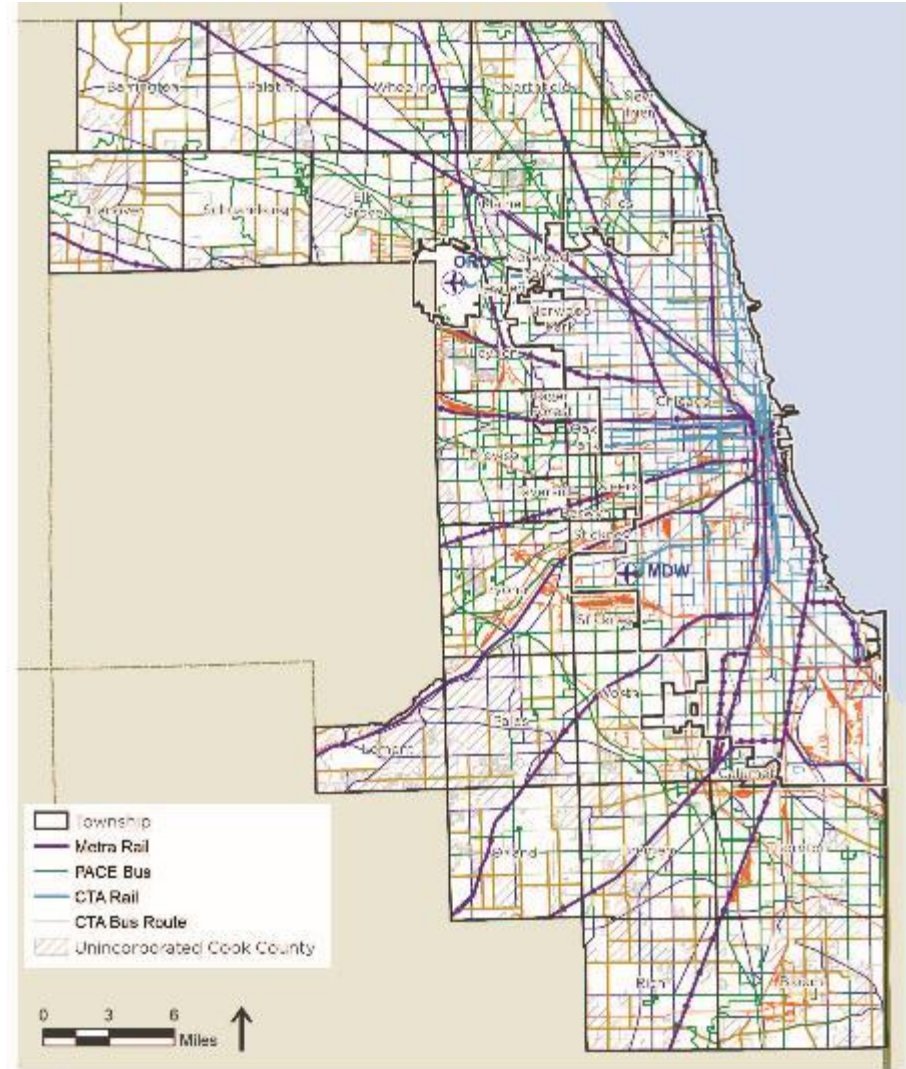
John Yonan, P.E., Superintendent

Cook County Department of Transportation and Highways

COUNTY ROADS vs. FULL NETWORK



Source: Cook County Department of Transportation and Highways



Source: Chicago Metropolitan Agency for Planning, October 2012; Chicago Transit Authority, 2012; PACE, 2012; National Transportation Atlas Database, 2012.

COUNTY ROADS vs. FULL NETWORK



PRESIDENT'S VISION



- Long Range Transportation Plan
- Economic and Community Health Depend on Transportation
- Time for Strong Leadership
- County Uniquely Positioned
- The Long Range Transportation Plan is a CALL TO ACTION

THE PRIORITIES

- **Prioritize Transit and Other Transportation Alternatives**
- **Support the Region's Role as North America's Freight Capitol**
- **Promote Equal Access to Opportunities**
- **Maintain and Modernize What Already Exists**
- **Increase Investments in Transportation**



TRANSIT & ALTERNATIVES



- **Improved Transit is Essential**
 - Addresses Congestion
 - Meets Mobility Needs of those Without Cars

- **Alternate Modes are Critical to Connecting Residents to Schools, Stores, Work and more**
 - Walking
 - Biking
 - Car Sharing
 - Ride Sharing



TRANSIT & ALTERNATIVES



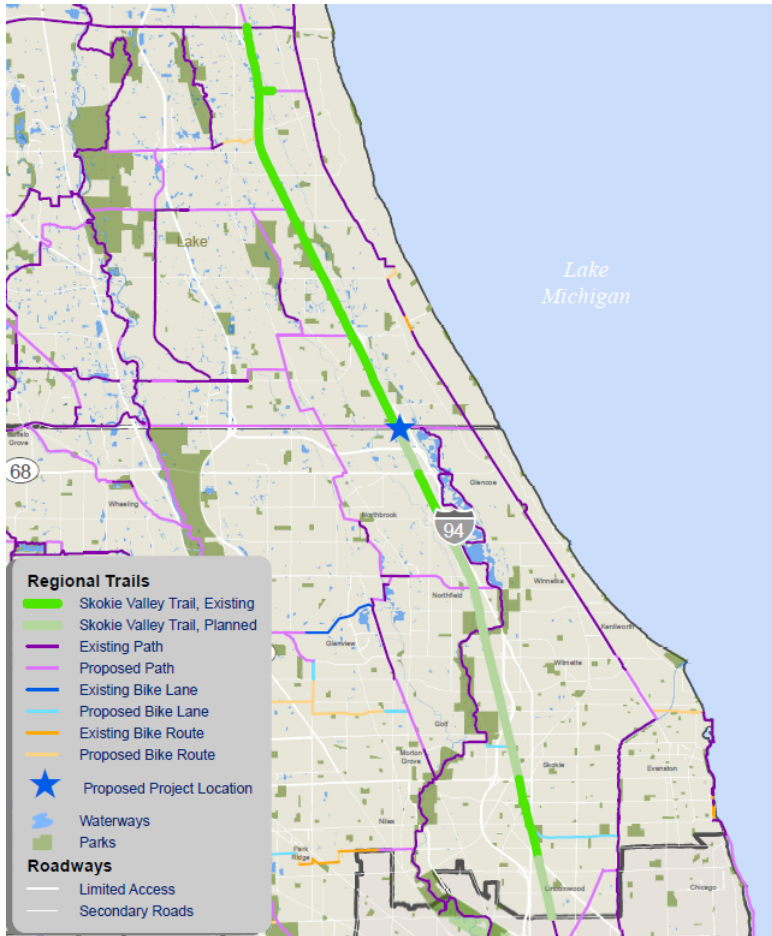
Rosemont Station
Transportation Center and
Transit-Oriented Development



A Walk Along The 606



TRANSIT & ALTERNATIVES



Skokie Valley Trail



Skokie Valley Trail Bridge Over Lake Cook Road



FREIGHT CAPITAL

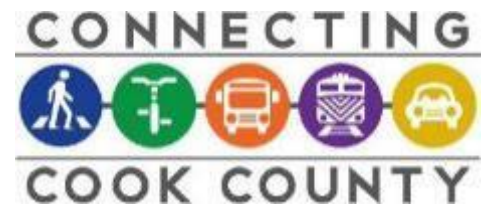


- **Freight as an Economic Driver**
- **Challenges with the Infrastructure**
- **Competition with other Regions**
- **Must Make Plans, Policies and Investments**
 - Retain and Strengthen Market Share
 - With Solid Public Benefits

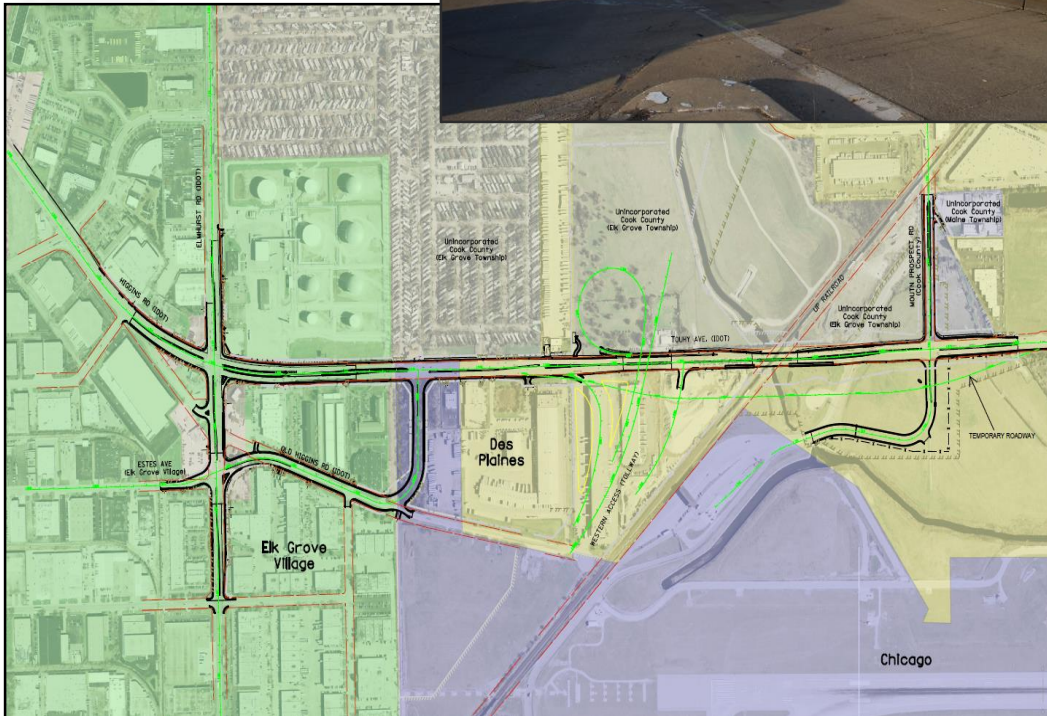
FREIGHT CAPITAL



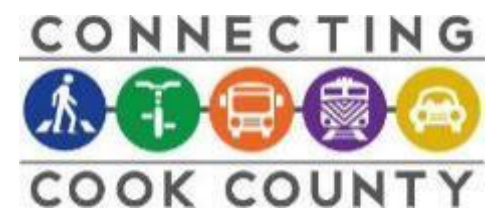
75th Street Corridor Improvement Project



FREIGHT CAPITAL



Touhy Avenue Multi-Modal Safety and Capacity Improvement Project



EQUAL ACCESS



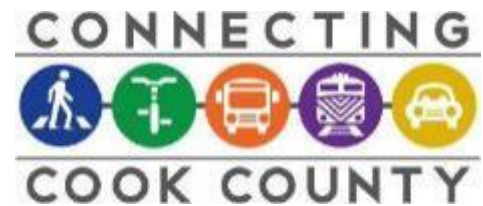
- **Services & Opportunities Not Equally Distributed**
- **Disproportionately Affects African Americans and Residents of South Cook County**
- **Fully Use Human, Transportation, Real Estate and Business Assets**
- **Conducive to Business Expansion**
- **Jobs More Broadly Accessible**



EQUAL ACCESS



South Suburban Pilot program



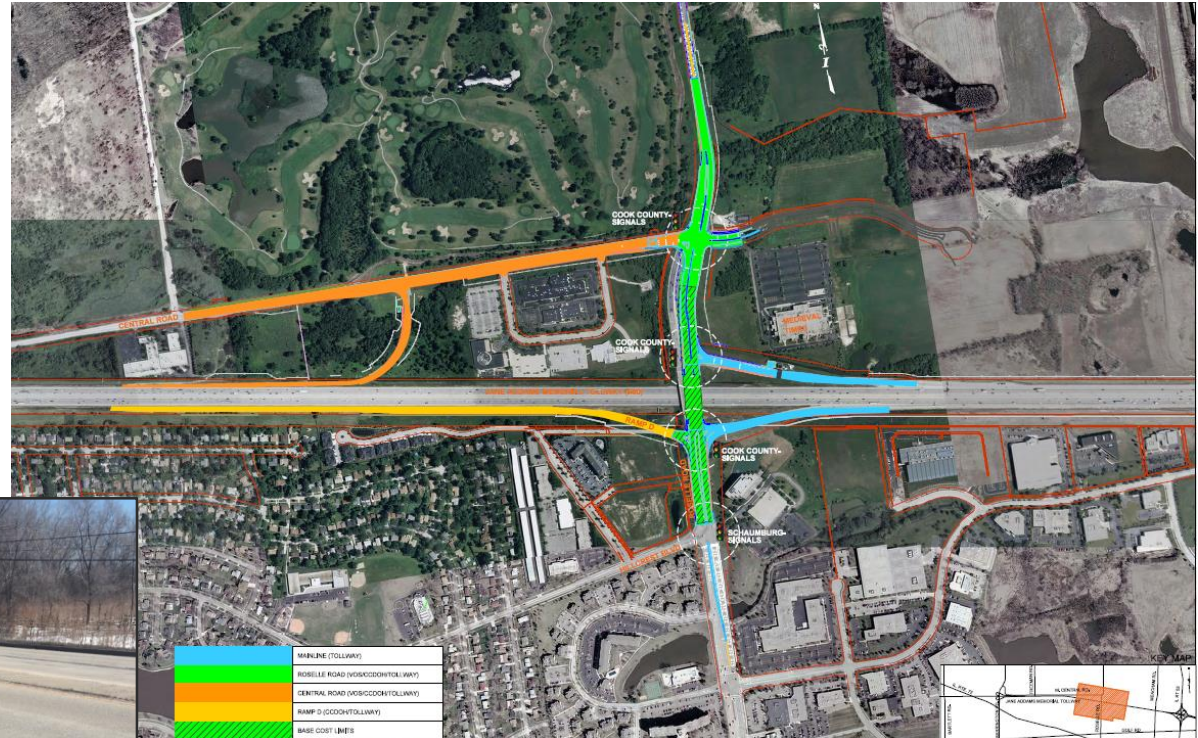
EQUAL ACCESS



South Suburban Pilot program



MAINTAIN & MODERNIZE



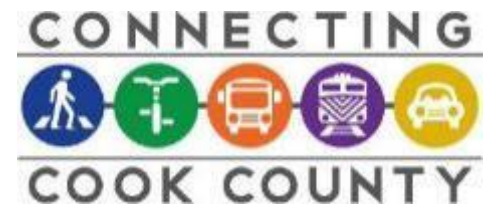
Central Road, Roselle Road, I-90 Full Interchange



MAINTAIN & MODERNIZE



Transit Priority on Expressways



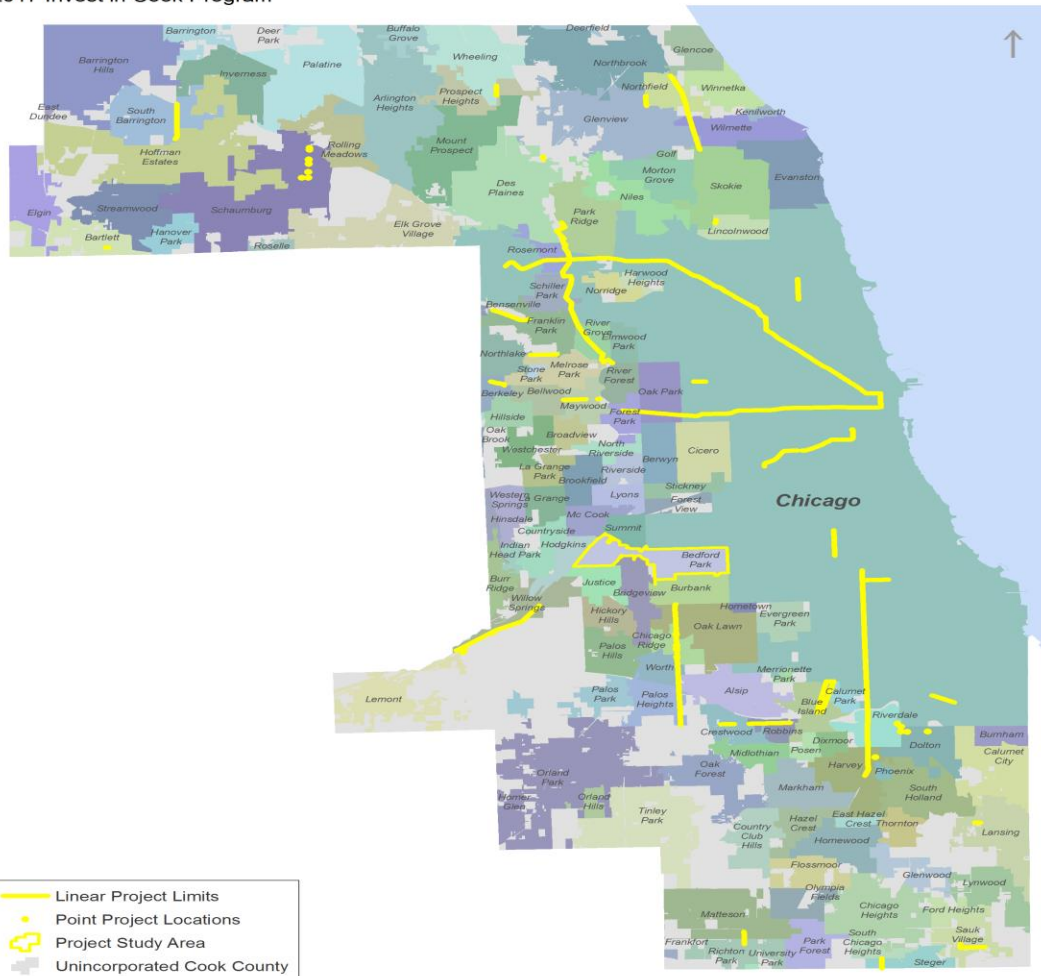
INVEST

- Even with better and more collaborative spending practices, current revenues are not sufficient to adequately address the County's transportation needs.
- Invest in Cook – 30 Projects selected

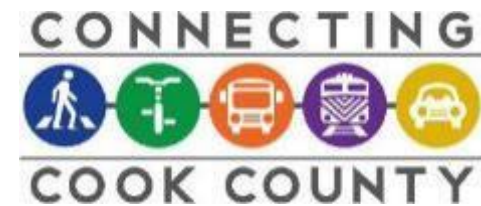


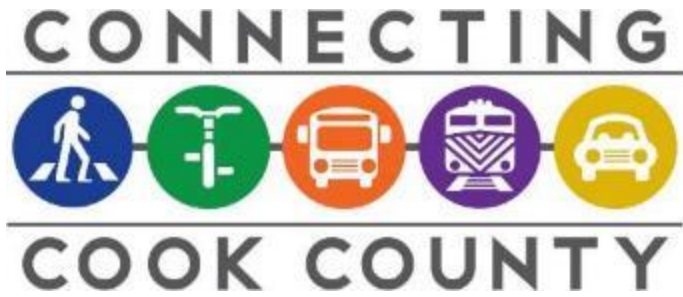
INVEST

2017 Invest in Cook Program



- Invest in Cook
- 106 Application
- 30 Projects selected
- \$7.4 M leveraging additional \$7.2 M





THANK YOU

John Yonan, P.E., Superintendent
john.yonan@cookcountyl.gov



facebook.com/ConnectingCookCounty



[@connectingcook](https://twitter.com/connectingcook)

WWW.CONNECTINGCOOKCOUNTY.ORG